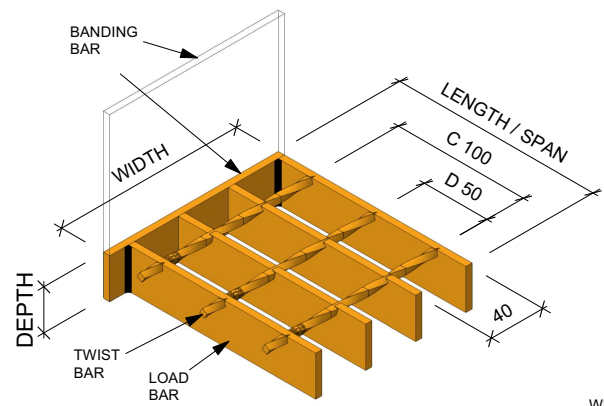


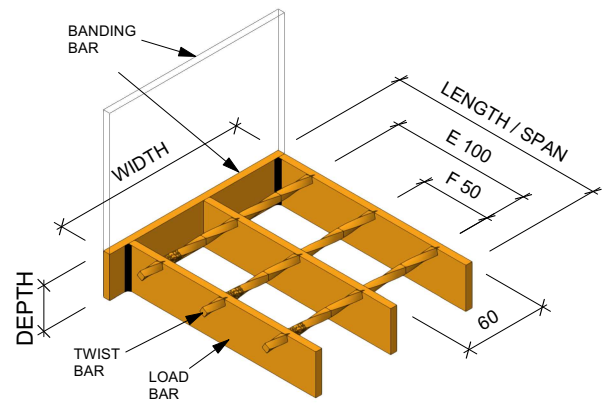
STOCK A & B GRATING

WELD ONE SIDE OF EVERY 5th LOAD BAR TO BANDING BAR
ie MAXIMUM BETWEEN WELDS IS 120mm



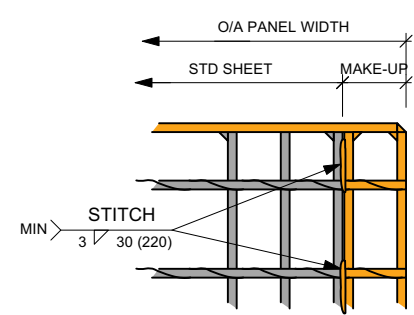
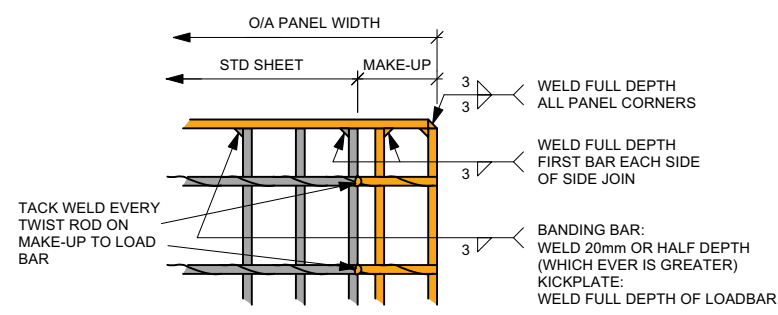
STOCK C & D GRATING

WELD ONE SIDE OF EVERY 4th LOAD BAR TO BANDING BAR
ie MAXIMUM BETWEEN WELDS IS 120mm

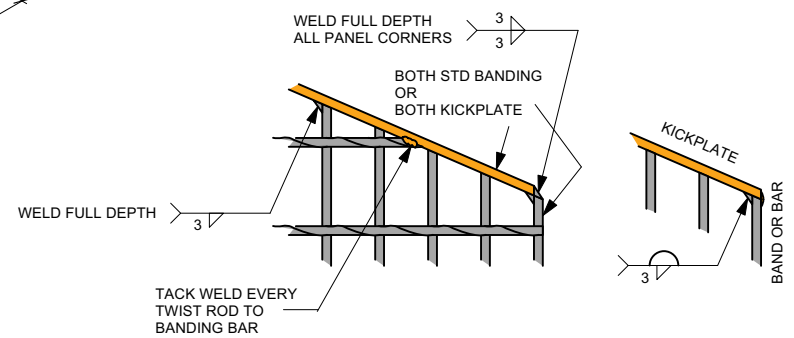


STOCK E & F GRATING

WELD ONE SIDE OF EVERY 3rd LOAD BAR TO BANDING BAR
ie MAXIMUM BETWEEN WELDS IS 120mm

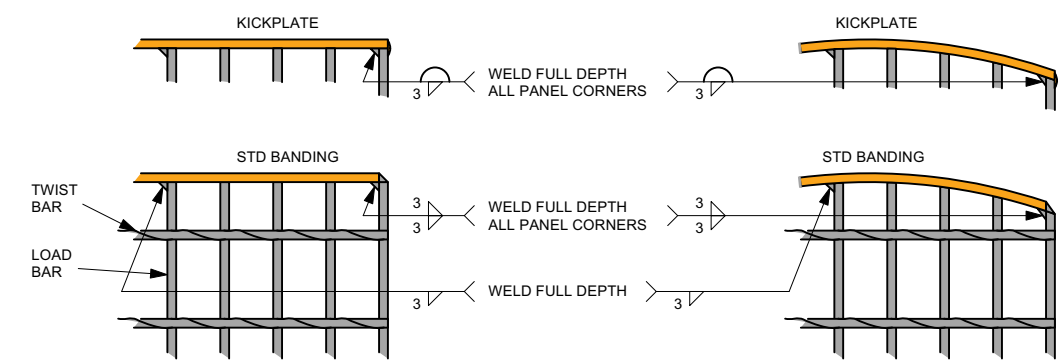


SIDE JOINING

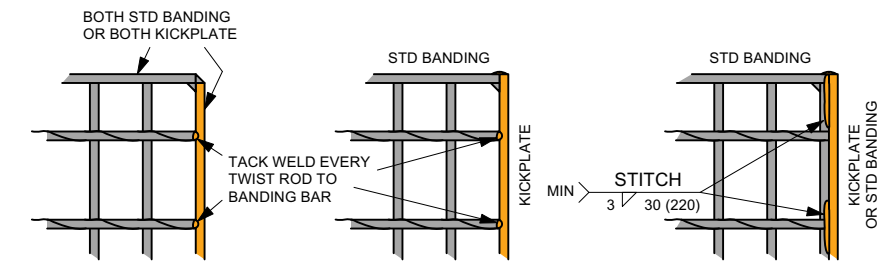


SPLAY BANDING

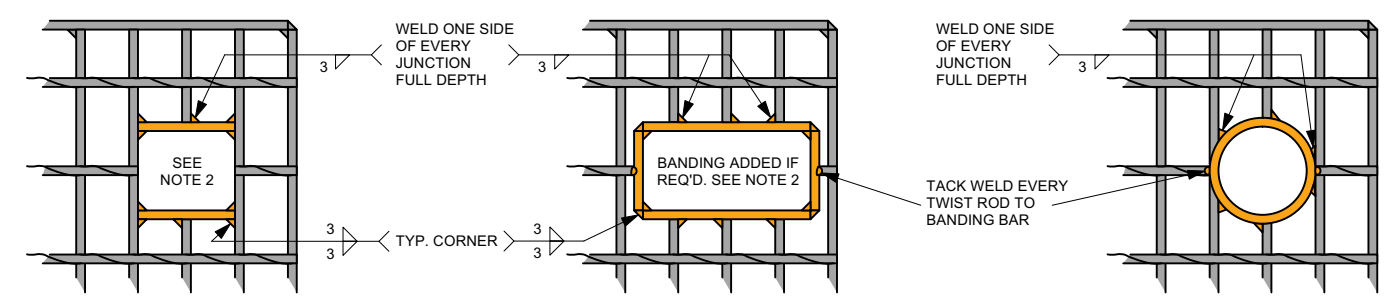
NOTE: MAX. DISTANCE BETWEEN WELDS 150mm



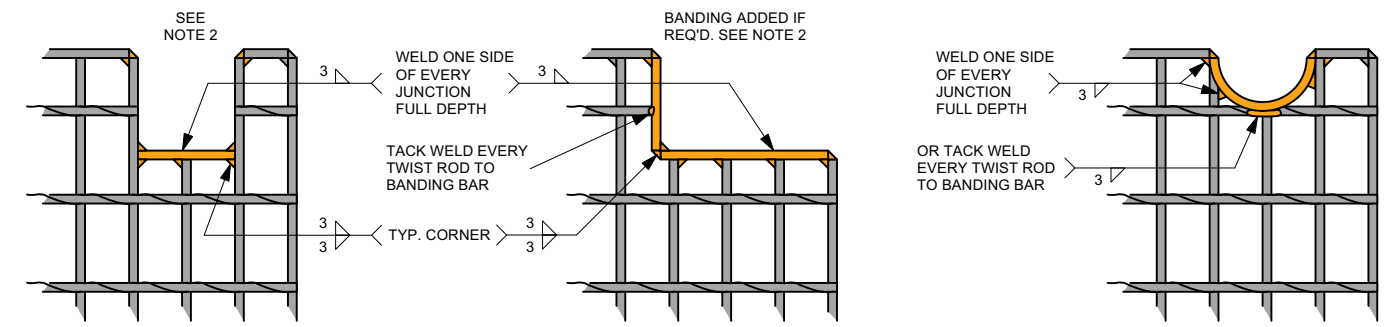
PERIMETER / END BANDING



SIDE BANDING



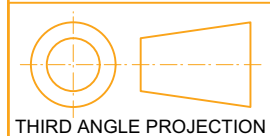
PENETRATIONS



CUTOUTS

NOTES:

1. THESE STANDARD WELDING DETAILS APPLY UNLESS NOTED OTHERWISE (UNO) ON DETAIL AND/OR LAYOUT DRAWINGS.
2. ALL RECTANGULAR PENETRATIONS AND CUTOUTS MAY BE ADJUSTED +25mm/-5mm TO THE NEAREST LOAD BAR WHEN THEY FALL WITHIN THE TOLLERANCE, INCLUDING PENETRATIONS AND CUTOUTS THAT ARE BANDED BY KICKPLATE.
3. NO WELDS, BANDING OR KICKPLATE WILL PROTRUDE BELOW THE UNDER SIDE OF GRATING UNO.
4. ALL BANDING BARS WILL BE 5mm THICK AND PLAIN OR SERRATED BAR TO MATCH THE GRATING.
5. ALL KICKPLATE WILL BE 6mm THICK MIN. UNO.
6. WELD SIZE WILL BE 3mm FILLET MIN. UNO.
7. ALL CIRCLE PENETRATIONS Ø100mm OR LESS WITH BANDING SIMILAR TO THE GRATING HEIGHT WILL BE MADE SQUARE UNO.
8. ALL CIRCLE PENETRATIONS Ø200mm OR LESS WITH KICKPLATE WILL BE MADE OCTAGONAL UNO.



LAST REVISED 6/9/2021

REV	7	NAME CHANGE & RE-FORMAT	<p>OLD: SALISBURY 4107 PH: (07) 3255 9885 VIC: LAVERTON NORTH 3026 PH: (03) 9368 6600 WA: BIBRA LAKE 6163 PH: (08) 9434 1961 www.mentis.com</p>	CLIENT STANDARD DRAWING GRATING WELDING PROCEDURES
	8	NEW ADDRESS		
	9	NEW ADDRESS & LOGO		
DRAWN		TAW	DRAWING No	MA.STD
SHEET No		200		REV
				9